



Roxtec CF 16 Ex transit

Transit device for Ex applications with a low profile metal frame design.

The Roxtec CF 16 Ex is a low profile cable entry seal for enclosures. The transit device is certified for use in Ex e and Ex tb areas. The seal is available in 304 stainless steel and openable versions, as well as for EMC applications.



- Rodent resistant
- Area efficient
- Allows pre-terminated cables

Product characteristics



IP/UL NEMA



Ex rated

Structure of installation



Cabinets & enclosures

Mounting type



Bolting

Ratings & certificates

Tightness

- IP 66/67, UL/NEMA 4,4X,12,13

Supports

- Ex rated

Frame dimensions

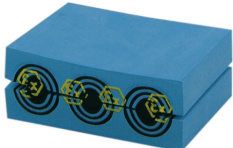
mm/kg

The frame variants below are a limited selection. For the full range of frames and configurations, please visit [roxtec.com](https://www.roxtec.com).

Product	Frame openings	Packing space	External dimensions WxHxD	Aperture dimensions w x h	Weight	Art. no
CF 16 Ex	1	40 x 160	93 x 234 x 42	71(+1/-1) x 187(+2/-0.5)	1.4	EXCSF0000160010
CF 16 Ex AISI304	1	40 x 160	93 x 234 x 42	71(+1/-1) x 187(+2/-0.5)	1.2	EXCSF0000160021

Sealing components

Sealing components



CM Ex module with Multidiameter™



CM Ex solid compensation module



Lubricant

For detailed information, please visit [roxtec.com](https://www.roxtec.com).



Pre-configured transit kits

mm/kg

Product	Configuration	External dimensions WxHxD	Aperture dimensions w x h	Weight	Art. no
CF 16/16 Ex AISI304	16x (3.5-16.5)			1.6	EXECF16001621
CF 16/10 Ex AISI304	2x (9.5-32.5), 8x (3.5-16.5)			1	EXECF16001021
CF 16/4 Ex AISI304	4x (9.5-32.5)			1.6	EXECF16000421
CF 16/19 Ex AISI304	6x (3.5-16.5), 12x (3.5-10.5), 1x (9.5-32.5)			1.6	EXECF16001921

The product information provided by Roxtec does not release the purchaser of the Roxtec system, or part thereof, from the obligation to independently determine the suitability of the products for the intended process, installation and/or use.

Roxtec gives no guarantee for the Roxtec system or any part thereof and assumes no liability for any loss or damage whatsoever, whether direct, indirect, consequential, loss of profit or otherwise, occurred or caused by the Roxtec systems or installations containing components not manufactured by an authorized manufacturer and/or occurred or caused by the use of the Roxtec system in a manner or for an application other than for which the Roxtec system was designed or intended.

Roxtec expressly excludes any implied warranties of merchantability and fitness for a particular purpose and all other express or implied representations and warranties provided by statute or common law. User determines suitability of the Roxtec system for intended use and assumes all risk and liability in connection therewith. In no event shall Roxtec be liable for indirect, consequential, punitive, special, exemplary or incidental damages or losses.

The Roxtec products are offered and sold in accordance with the conditions of the Roxtec General Terms of Sales. The latest version of the Roxtec General Terms of Sales can be downloaded from <https://www.roxtec.com/en/about-us/about-roxtec/general-terms-of-sales/>

We reserve the right to make changes to the product and technical information without further notice. Any errors in print or entry are no claims for indemnity. The content of this publication is the property of Roxtec International AB and is protected by copyright.

This document was generated on: 2024-04-26